

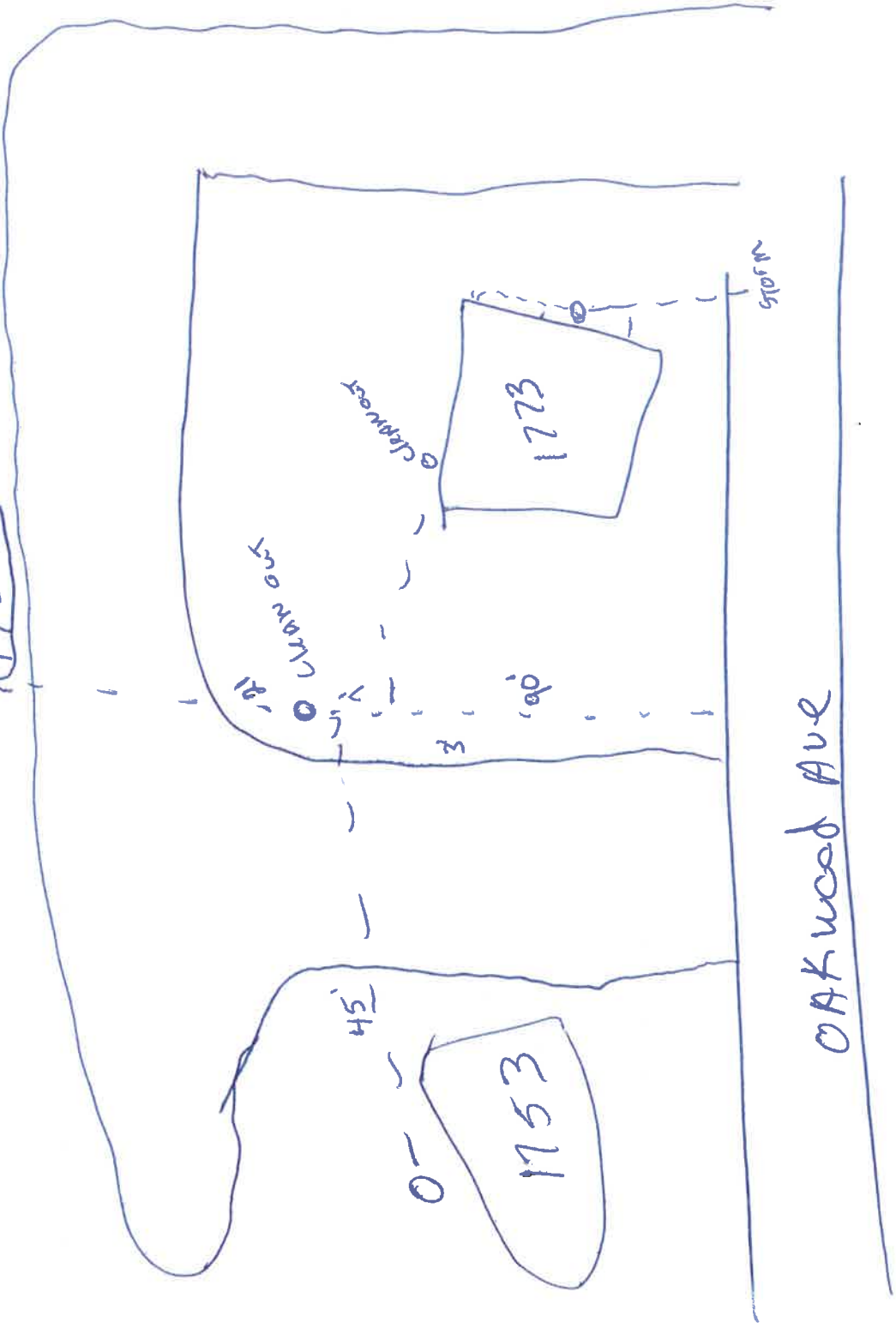
DYE TEST AND LOCATE. ALL TAPS AND LINES 1689 through 1775

2013



1711 Dye Tested
Oakwood

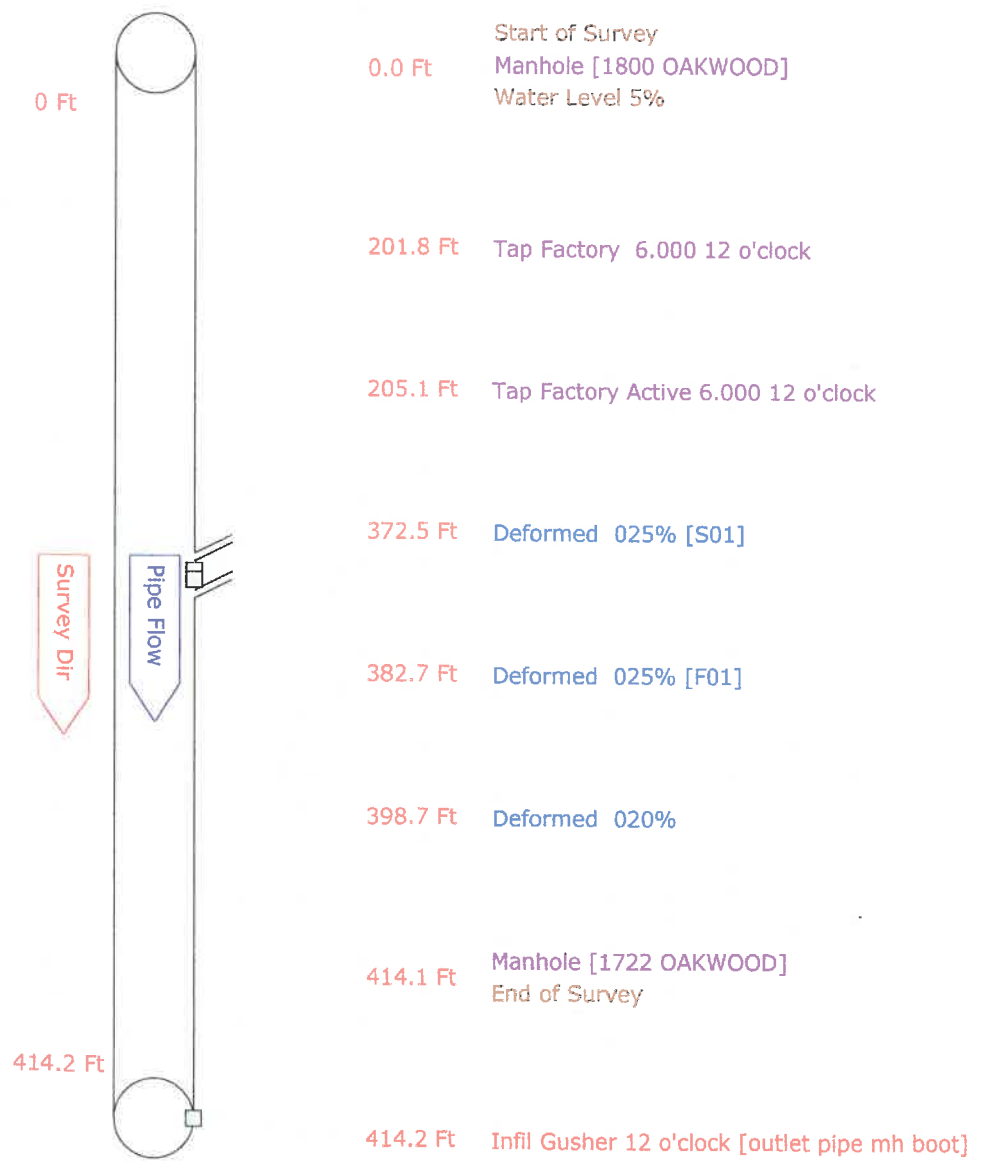
1759



OAKWOOD AVE

Pipe Graphic Report of PSR 1800 OAKWOOD X for City of Napoleon

Setup 1	Surveyor Roger Darr	Certificate # U-906-3742	System Owner		
Drainage	Survey Customer				
P/O #	Date 2013/07/12	Time 8:06	Street Oakwood		
City Napoleon	Further location details				
Start 1800 OAKWOOD	Rim to invert	Grade to invert	Rim to grade	Ft	
Finish 1722 OAKWOOD	Rim to invert	Grade to invert	Rim to grade	Ft	
Use Sanitary	Direction Downstream	Flow control	Media No 1		
Shape Circular	Height 10	Width ins	Preclean J	Year Cleaned 2013/07/09	
Material Polyvinyl Chloride	Joint length Ft	Total length 414.1 Ft	Length Surveyed 414.20		
Lining	Year laid	Year rehabilitated	Weather Saturated		
Purpose Routine Assessment	Cat				
Additional info			Structural	O&M	Constructional
Location Yard			Miscellaneous	Hydraulic	



50019
 1464
 51482
 24
 5172

Laid 1464 36" pipe

End 51482

7-31-90 laid 149 h.F. 36"

Start 51482

51472 4" Field tile hook up 3' deep

11 ft 6" P.U.C.

1 90° Bend

52702 4" tile 3 ft deep

11' 6" P.U.C.

1 90° Bend

52736.3 8" tile 1 pes.

10 ft 8" P.U.C. 6x8 Tee

17 ft 6" P.U.C. - 1 90° Bend

52769.2 2-4" Field tile hook up

9 1/2 ft 6" P.U.C.

11' 6" wide up

1 90° Bend

52789 6" tile 3 1/2 ft deep

9 ft. 6" P.U.C.

1-90° Bend

End 52797.4

149 ft laid of 36"

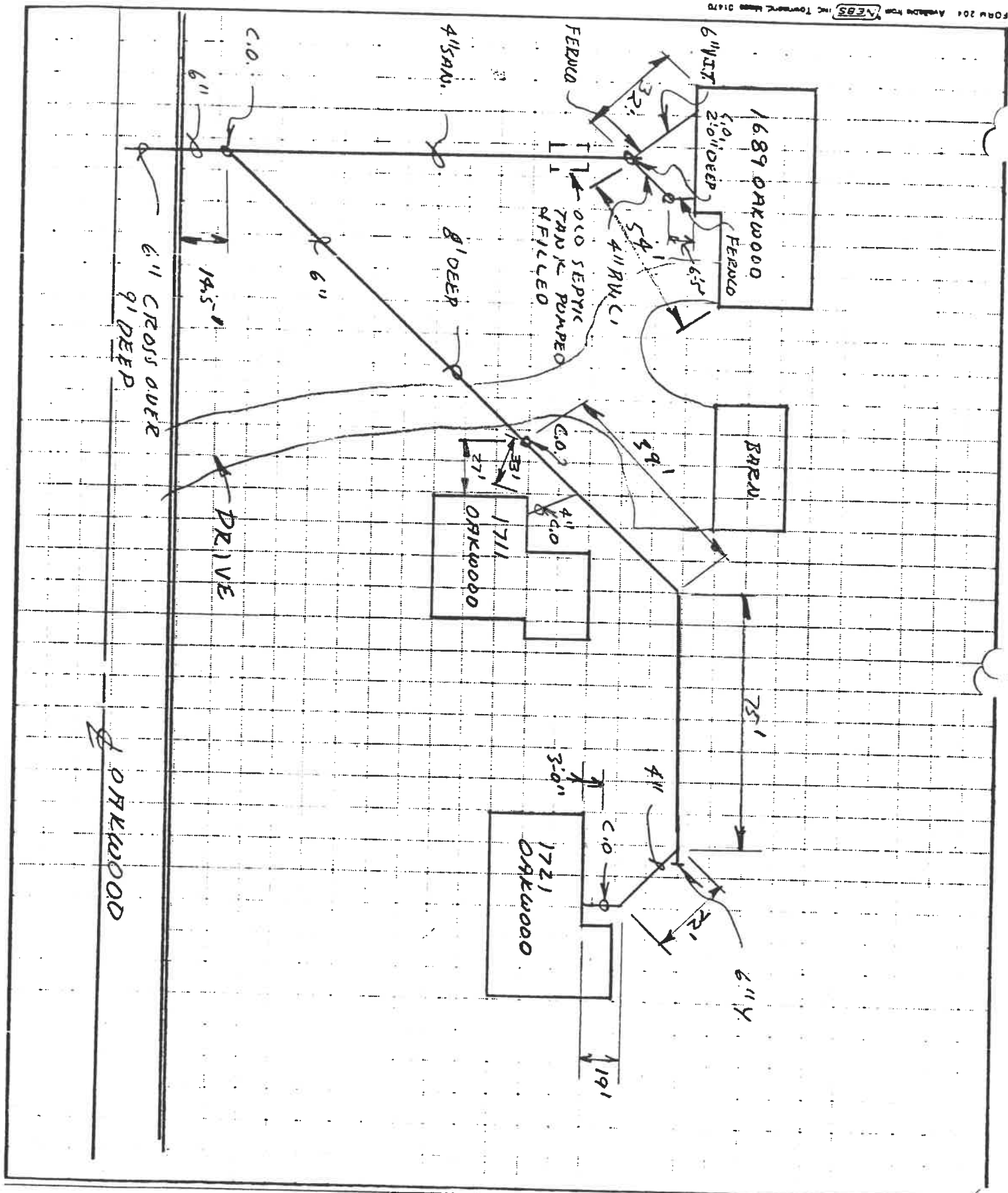
52736.3 8" tile 1 1/2' deep
 7 ft 8" P.U.C.
 1 90° Bend

52797.4
 52797.4

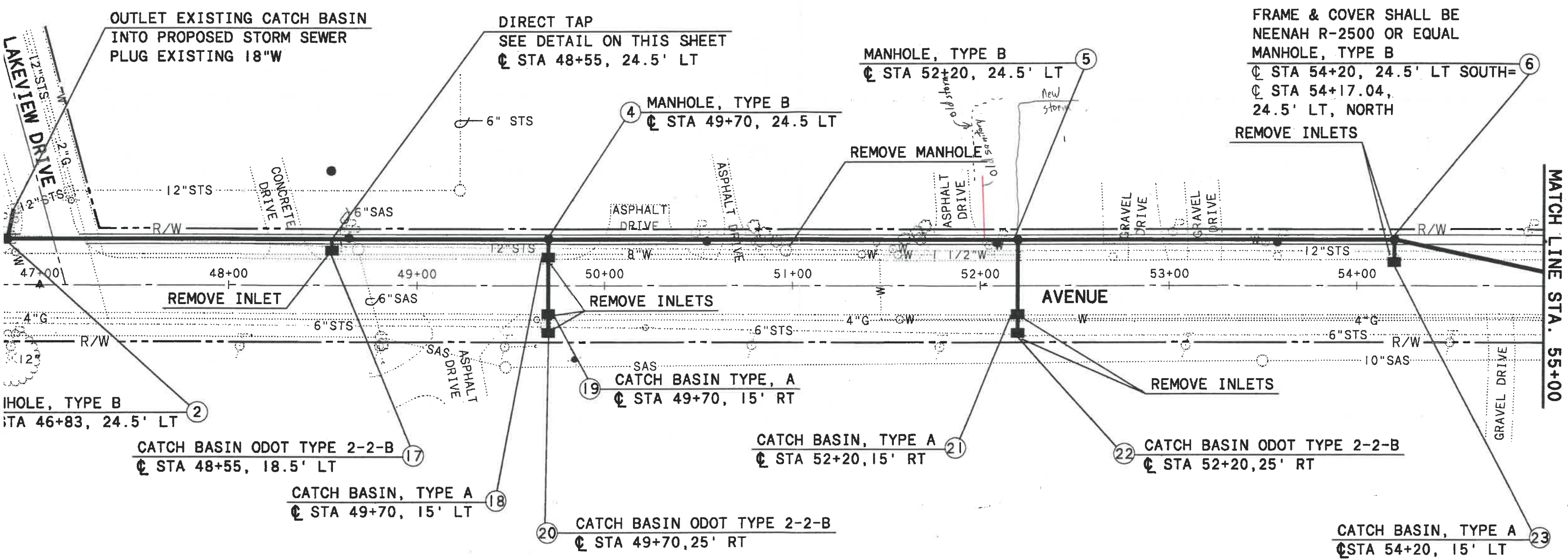
CITY OF NAPOLEON
 ENGINEERING DEPT.
 255 W RIVERVIEW
 NAPOLEON, OH 43545

JOB SEWER REPAIR INSPECTION
 SHEET NO 1689, 1711, 1721 OF ORKWOOD
 CALCULATED BY S.H.
 CHECKED BY S.H.
 DATE 6-11-87

SCALE



FORM 204 Available from NEBS, Inc. Formwork Item 0187



OUTLET EXISTING CATCH BASIN INTO PROPOSED STORM SEWER PLUG EXISTING 18"W

DIRECT TAP SEE DETAIL ON THIS SHEET
 ☉ STA 48+55, 24.5' LT

MANHOLE, TYPE B
 ☉ STA 52+20, 24.5' LT

FRAME & COVER SHALL BE NEENAH R-2500 OR EQUAL
 MANHOLE, TYPE B
 ☉ STA 54+20, 24.5' LT SOUTH=
 ☉ STA 54+17.04, 24.5' LT, NORTH

MANHOLE, TYPE B
 ☉ STA 49+70, 24.5' LT

REMOVE MANHOLE

REMOVE INLETS

MATCH LINE STA. 55+00

REMOVE INLET

REMOVE INLETS

AVENUE

REMOVE INLETS

CATCH BASIN TYPE, A
 ☉ STA 49+70, 15' RT

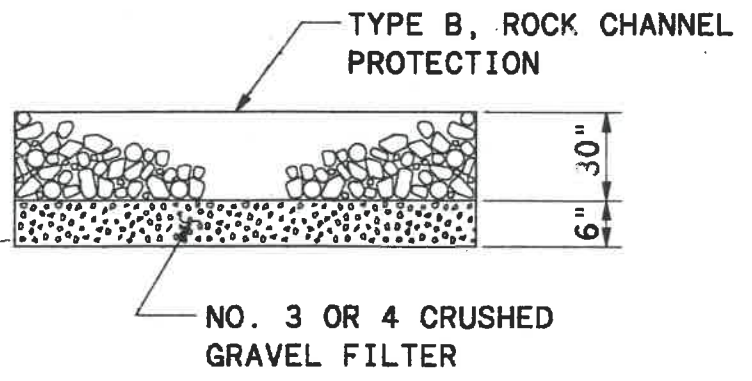
CATCH BASIN, TYPE A
 ☉ STA 52+20, 15' RT

CATCH BASIN ODOT TYPE 2-2-B
 ☉ STA 52+20, 25' RT

CATCH BASIN, TYPE A
 ☉ STA 49+70, 15' LT

CATCH BASIN ODOT TYPE 2-2-B
 ☉ STA 49+70, 25' RT

CATCH BASIN, TYPE A
 ☉ STA 54+20, 15' LT



ROCK CHANNEL PROTECTION
 NO SCALE